

ONLINE Winter Show

7-21 DECEMBER 2020



ONLINE WINTER SHOW 2020

An online group exhibition of drawings and paintings
7-21 December 2020 | Private view: 8th December, 7pm.

Susan Clare, Felicity Swan, Elise Mendelle, Justyna Koziczak,
Sandra Menant, Siméon Artamonov, Sue McQueen.

view.artsime.com
#onlinewintershow

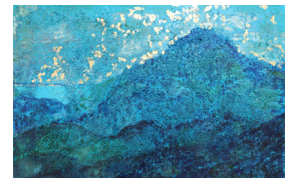
A group exhibition of contemporary British paintings and drawings will take place from 7-21 December, but with a twist — the exhibition will be hosted exclusively online. The Online Winter Show will present new and recent works by seven UK-based artists via the platform view.artsime.com, as an interactive and exciting opportunity to view and celebrate art this festive season.

With a selection of **40 brightly coloured** paintings, works on paper and mixed media works, the Online Winter Show will offer a safe, unique way to enjoy art and support the work of artists. A wider programme of events like a Zoom private view and artist-led video tours will offer additional joyful, celebratory ways for art lovers to engage and interact, and share their passion for art.

View.artsime.com is a unique art viewing platform that offers a professional, high-quality online gallery experience for both artists and visitors. With the Online Winter Show, visitors will be able to discover vivid landscapes, meditative abstract works and captivating portraits — all from the safety of their own home.

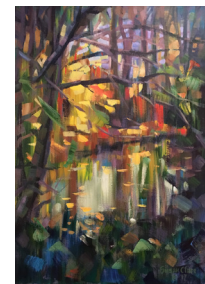
Although very varied in their technique, style and approach, the artists will present a selection of works that will shine through bold colours and very unique working practises. Whether it's through the choice of material, inspiration or subject matter, the artists share a natural, organic quality to their work that brings life and warmth to all their artistic creations, from abstract scenes to vivid landscapes.

Susan Clare, **Sandra Menant** and **Sue McQueen** will present scenes inspired by landscapes and seascapes, ranging from depictions of natural settings to more abstract interpretations. Clare, in particular, focuses on the vibrancy of the natural world, sourcing inspiration in tropical gardens and coral reefs as well as British and London sceneries. **Menant** describes her work as that of a colourist; her style showcases her love of vibrant pigments and textures, with material ranging from paste and pigment, to sand and gold leaf. **McQueen** makes landscape and nature a key element of her paintings, which are often inspired by her own garden: she works in brightly coloured layers, mimicking seasonal changes and the life cycles of the natural world through deconstructed images.



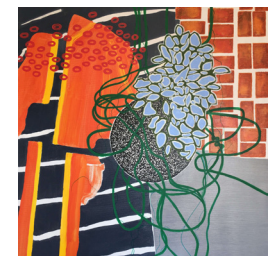
Nagano
Sandra Menant

Acrylic, inks, sand and gold leaf on canvas
80 × 52 × 4 cm - £ 900



Fall River
Susan Clare

Acrylic wash & oil on canvas
42 × 60 × 2 cm - £ 450



Held
Sue McQueen

Acrylic wash & oil on canvas
76 × 76 × 2 cm - £ 835

ONLINE Winter Show

7-21 DECEMBER 2020



Delving into a more abstract approach, **Justyna Koziczak** will present works that explore the fears and challenges that people need to confront in modern society, and **Felicity Swan** delve into an intuitive and figurative approach to art. **Koziczak** creates dream-like, mystic compositions with dynamic brushstrokes of oil on canvas. Through her mastery of strong light and shadow contrast, she achieves expressive compositions and conveys topics of struggle and loneliness, but also hope and the beauty of life. **Swan** takes an intuitive approach of both painting and drawing, creating tension between swathes of colour and drawn lines. Her bold and dynamic canvases blend the boundaries between truly abstract and figurative scenes, with figures still retaining some link to the real world.

Selected paintings by **Elise Mendelle** offer a fresh, modern take on portraiture and natural, expressive scenes. Intense washes of colour and visible brushstrokes create highly visual depictions in the form of female figures and portraits.

Exuding joy and tranquility, **Siméon Artamonov's** work is defined by dynamic brushstrokes, bright colours and geometrical shapes; his use of solid patterns and intricate motifs give his scenes an almost tactile quality. He will contribute a new series of custom prints to the exhibition.

The artists commented: *"We are delighted to participate in this exhibition and show our work as a collective. The programme of events, quality of the presentation and group showing are the perfect celebration for this time of year, and we are really excited for visitors to discover the artworks. We hope the Online Winter Show will bring visual warmth and joy to our visitors."*

By offering exclusive access to beautiful art through the Online Winter Show, the artist collective aims to provide access to exquisite, quality art, and bring the joy of fine art and colours to people at a time when it is not possible to attend live exhibitions.

The Online Winter Show will be on view at view.artsime.com
from 7 December (6pm) to 21 December (8pm).
Works start at £150.

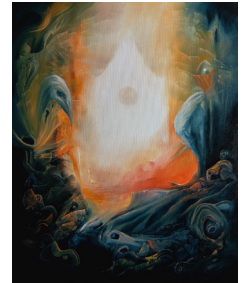
Private view online, visit <https://a.rtsi.me/ows-evtbrit-pv> for more info.

For any enquiry on the exhibition, artists and programme of events, please contact:

Siméon Artamonov

Sales enquiries: sales@artsime.com

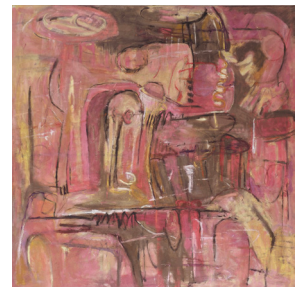
Platform enquiries: view@artsime.com



The Agony and The Ecstasy
Justyna Koziczak

Oil on canvas

61 × 76 × 1,5 cm - £ 500



Rose Babylon

Felicity Swan

Acrylic wash & oil on canvas

100 × 100 × 3 cm - POA

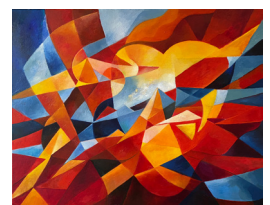


Morning Mysteries

Elise Mendelle

Oil on canvas

40 × 50 × 4 cm - £ 340



The Flight

Siméon Artamonov

Oil on canvas, Framed

61 × 76 × 2 cm - £ 600